

## Anti-His tag Monoclonal Antibody

Cat. #: P-205

### Immunogen/Specificity:

6x His synthetic peptide. His-tag Monoclonal Antibody. Recognizes His- tagged recombinant proteins or His-tagged proteins over-expressed in cells.

### Applications :

Western Blot (1:1000), Immunoprecipitation and Immunostaining (1:200).

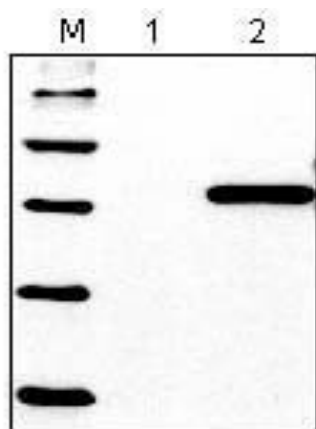
### Formulation

1mg/ml in PBS, pH 7.4 with 0.05% sodium azide. Frozen liquid.

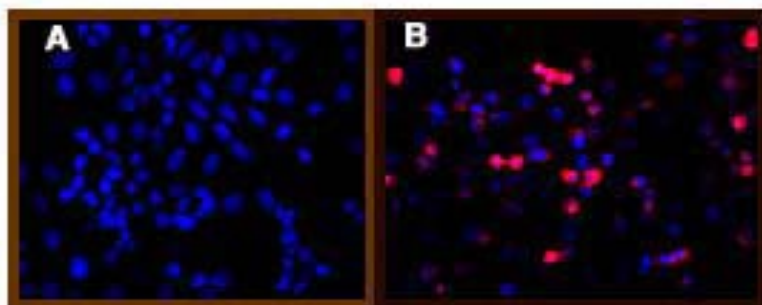
**Clone Number:** HIS.H8

**Isotype:** IgG2b

**Storage and Stability:** Stable for one year at  $-20^{\circ}\text{C}$  from date of shipment. For maximum recovery of product, centrifuge the original vial after thawing and prior to removing the cap. Aliquot to avoid repeated freezing and thawing. Aliquot will be stable at  $4^{\circ}\text{C}$  for 3 months.



His Western Blot analysis of 293 cells transfected with His-tagged vector (2) and untransfected control (1).



Immunofluorescence staining of His-tag fusion protein in 293 cells. A: untransfected control, B: transfected