

Anti-HA tag Monoclonal Antibody

Cat. #: P-206

Immunogen/Specificity:

A synthetic peptide from influenza hemagglutinin epitope (YPYDVPDYA) coupled to KLH.
HA-tag monoclonal antibody. Recognizes HA-tagged proteins overexpressed in cells, including both amino- or carboxy-termini of targeted proteins in transfected mammalian cells.

Applications :

Western blot (1:1000), Immunoprecipitation and immunostaining (1:200) .

Formulation

1mg/ml in PBS, pH 7.4 with 0.05% sodium azide.
Frozen liquid.

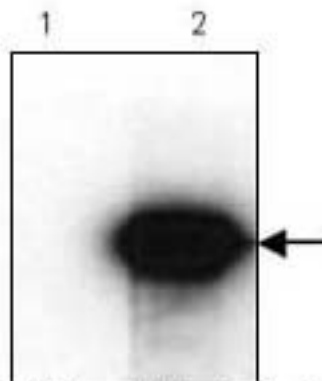
Clone Number: HA.C5

Isotype: IgG3

Storage and Stability: Stable for 1 year at -20°C from date of shipment. For maximum recovery of product, centrifuge the original vial after thawing and prior to removing the cap. Aliquot to avoid repeated freezing and thawing. Aliquot will be stable at 4°C for 3 months. Aliquot to avoid repeated freezing and thawing. Aliquot will be stable at 4°C for 3 months.



Immunofluorescence staining of HA-tag fusion protein (transcription factor) in a stable expressing cell line (B) and control cell line (A).



HA Western Blot analysis of 293 cells transfected with HA-tagged vector (2) and untransfected control (1).