

Anti-Flag tag Antibody

Cat. #: P-210

Immunogen/Specificity:

A synthetic peptide (DYKDDDDK) coupled to KLH
Recognises over-expressed proteins containing Flag
epitope tag fused to either amino- or carboxy-termini
of targeted proteins in transfected mammalian cells.

Applications :

Western Blot (1:1000), Immunoprecipitation and
Immunostaining (1:200).

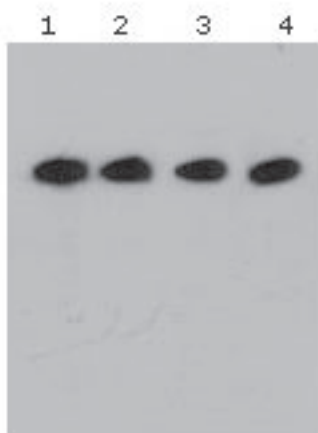
Formulation

1mg/ml in PBS (pH 7.2) with 50% glycerol.

Clone Number: GST.B6

Isotype: IgG2b

Storage and Stability: Stable for one year at -20°C
from date of shipment. For maximum recovery of
product, centrifuge the original vial after thawing
and prior to removing the cap. Aliquot to avoid
repeated freezing and thawing. Aliquot will be stable
at 4°C for 3 months.



Flag Western Blot analysis of 293 cells transfected
with Flag-tagged vectors at different concentrations
of the Anti-Flag antibody. Lane 1: highest concen-
tration (0.5 mg/ml), Lane 4: lowest concentra-
tion (0.1 $\mu\text{g/ml}$).