

## Cell Cycle, Signal Transduction, Apoptosis

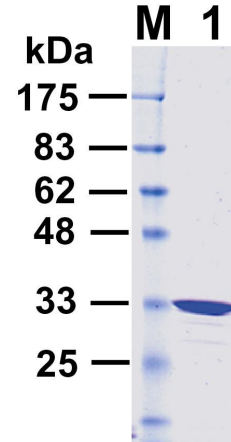
### Human 14-3-3sigma (Stratifin, SFN)

Molecular Mass: 28 kDa

Catalog #	Size
ANT-44	5 µg

#### Description

Human 14-3-3sigma was first identified as an epithelial cell antigen exclusively expressed in epithelia. It is involved in the regulation of cell proliferation, cell cycle, cell cycle checkpoint control, and apoptosis. It is considered a tumor suppressor protein. This protein positively regulates p53 and suppresses tumor growth. It also acts as a negative regulator of the glucocorticoid signaling pathway.



**Purified human 14-3-3sigma.** The protein (582 ng, lane 1) was analyzed by electrophoresis on a 15% SDS-polyacrylamide gel and visualized by staining with Coomassie blue. Protein size markers (lane M) are indicated on the left..

Toll Free: 1-866-964-2589, Fax: 650-964-2519, [info@antageneinc.com](mailto:info@antageneinc.com),  
[www.antageneinc.com](http://www.antageneinc.com)