



## DNA Repair, Replication, Recombination Yeast Rev1

**Molecular Mass: 112 kDa**

**Catalog#** ANT-25

**Size:** 2 $\mu$ g

**Price:** \$250

### Description

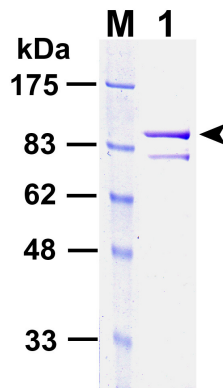
Yeast Rev1 is a member of the Y family DNA polymerases. It possesses the DNA template-dependent dCMP transferase. In yeast cells, Rev1 is required for mutagenesis induced by several types of DNA damaging agents. In vitro, Rev1 is able to insert a C opposite several types of DNA lesions.

### Reaction Buffer

25 mM potassium phosphate (pH 7.0), 5 mM MgCl<sub>2</sub>, 5 mM DTT, 100  $\mu$ g/ml BSA, 10% glycerol, 50-100  $\mu$ M dNTPs.

### Dilution Buffer

25 mM Tris-HCl (pH 7.5), 2.5 mM  $\beta$ -mercaptoethanol, 50% glycerol.



**Purified yeast Rev1.** The protein (300 ng) was analyzed by electrophoresis on a 10% SDS-polyacrylamide gel and visualized by staining with Coomassie blue. The arrowhead indicates the full length Rev1. The faint band below the arrowhead is a truncation product of Rev1. Protein truncation (degradation) is common among the Y family DNA polymerases in eukaryotes. Protein size markers (lane M) are indicated on the left.

**For research use only**

To reorder contact us at:  
**Antagene, Inc.**  
**Toll Free: 1(866)964-2589**  
Tel: (650) 964-2589  
Fax: (650) 964-2519  
email: [Info@antageneinc.com](mailto:Info@antageneinc.com)