



## **DNA Repair, Replication, Recombination Human DNA Polymerase $\eta$ (XPV Protein)**

**Molecular Mass:** 78 kDa

**Catalog#** ANT-19

**Size:** 2 $\mu$ g

**Price:** \$250

### **Description**

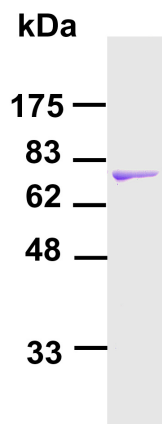
DNA polymerase  $\eta$  is a member of the Y family DNA polymerases. It is involved in translesion synthesis, either error-free or error-prone, depending on the specific types of DNA lesion. Deficiency of Pol $\eta$  in humans leads to the XPV disease.

### **Reaction Buffer**

25 mM potassium phosphate (pH 7.0), 5 mM MgCl<sub>2</sub>, 5 mM DTT, 100  $\mu$ g/ml BSA, 10% glycerol, 50-100  $\mu$ M dNTPs.

### **Dilution Buffer**

25 mM Tris-HCl (pH 7.5), 2.5 mM  $\beta$ -mercaptoethanol, 50% glycerol.



**Purified human DNA polymerase  $\eta$ .** The protein (60 ng) was analyzed by electrophoresis on a 10% SDS-polyacrylamide gel and visualized by staining with Coomassie blue. Protein size markers are indicated on the left.

**For research use only**

To reorder contact us at:  
**Antagene, Inc.**  
**Toll Free: 1(866)964-2589**  
Tel: (650) 964-2589  
Fax: (650) 964-2519  
email: [Info@antageneinc.com](mailto:Info@antageneinc.com)