

Monoclonal Antibody to P11

Cat. #: Mab-607043

Description:

S100 calcium binding protein A10 (S100A10/P11), The protein encoded by this gene is a member of the S100 family of proteins containing 2 EF-hand calcium-binding motifs. S100 proteins are localized in the cytoplasm and/or nucleus of a wide range of cells, and involved in the regulation of a number of cellular processes such as cell cycle progression and differentiation. S100 genes include at least 13 members which are located as a cluster on chromosome 1q21. This protein may function in exocytosis and endocytosis.

Immunogen/Specificity:

Ni-NTA purified truncated recombinant P11 expressed in E. Coli strain BL21 (DE3)

Applications :

Dilution

ELISA: Propose dilution 1: 10,000

WB:1:100-1:500

IF:1:100-1:500

FCM:1:100-1:500

Determining optimal working dilutions by titration test.

Formulation

Antibodies are purified by protein A affinity chromatography

Reference:

1. Svenningsson P, Greengard P. *Curr Opin Pharmacol.* 2007;7(1):27-32.
2. Santamaria-Kisiel L, Rintala-Dempsey AC, Shaw GS. *Biochem J.* 2006;396(2):201-14.
3. Rust R, VL, van dJ, Harms G,.et al. *Br J Haematol.* 2005;131(5):596-608.

Clone Number: 4E7E10

Isotype: IgG1

Species: Human

Storage and Stability: stored at -20 C

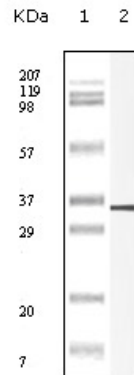


Figure 1: Western blot analysis using P11 antibody against truncated P11 recombinant protein.

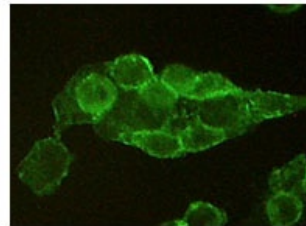


Figure3: Immunofluorescence analysis of L-02 cells using P11 showing cytoplasmic and membrane localization

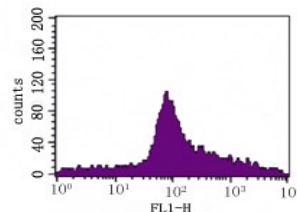


Figure2: Flow cytometric analysis of L-02 cells using monoclonal antibody to human P11