

# Monoclonal Antibody to Desmin

Cat. #: Mab-606102

## Description:

Desmin (DES), with 470-amino acid protein (about 52kDa), belongs to the intermediate filament family and Desmin is class III intermediate filaments found in muscle cells. Homopolymers of Desmin form a stable intracytoplasmic filamentous network connecting myofibrils to each other and to the plasma membrane. Mutations in Desmin are associated with desmin-related myopathy, a familial cardiac and skeletal myopathy (CSM), and with distal myopathies. Desmin is also expressed in smooth muscle cells of both airways and alveolar ducts and Desmin is a load-bearing protein that stiffens the airways and consequently the lung and modulates airway contractile response.

## Immunogen/Specificity:

Ni-NTA purified truncated recombinant Desmin expressed in E. Coli strain BL21 (DE3)

## Applications :

Western Blot: 1: 1,000- 1: 2,000

IHC(P): 1: 1,000- 1: 2,000

IHC(F): 1: 1,000- 1: 2,000

ELISA: Propose dilution 1: 10,000.

Determining optimal working dilutions by titration test.

## Reference:

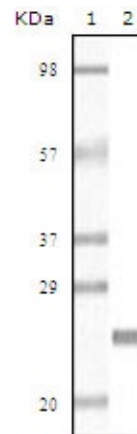
1. Felix R. Shardonofsky, Yassemi Capetanaki, and Aladin M. Boriek  
Am J Physiol Lung Cell Mol Physiol, May 2006; 290: L890 - L896
2. Xupei Huang, Jian Li, Dalton Foster  
Experimental Biology and Medicine, Dec 2002; 227: 1039

Clone Number: 10H7D2

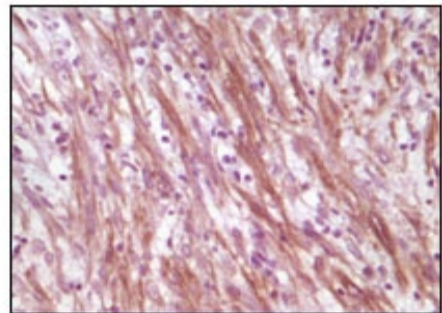
Isotype: IgG1

Species: Human

Storage and Stability: stored at -20 C



**Figure 1:** Western blot analysis using anti-human Desmin monoclonal antibody against truncated Desmin recombinant protein.



**Figure 2:** Immunohistochemical analysis of paraffin-embedded human smooth muscle sarcoma, showing cytoplasmic localization, using Desmin antibody with DAB staining.