

Monoclonal Antibody to BSA

Cat. #: Mab-605071

Description:

Bovine serum albumin (BSA) is used in variety of laboratories products which contain BSA as a stabilizer. BSA could be detected for the indication of remains of chemical derivates from animal products. This antibody is a good reagent that may be used for the development of detection assay in ELISA or western blot to test the remaning BSA for clinical products in Vivo or research products In Vitro.

Immunogen/Specificity:
Bovine serum albumin.

Applications :

Western Blot: Dilution 1: 300- 1000

ELISA: Propose dilution 1: 10000.

Determining optimal working dilutions by titration test.

Formulation
Crude ascites

Reference:

1. Heininen P, Iitja A, Torresani T, et al, Simple triple-label detection of seven cystic fibrosis mutations by time-resolved fluorometry. Clin Chem 1997,43 (7): 1142-1150.
2. Papadopoulos.N, Mutation of a mutL homolog in hereditary colon cancer. Science 1994.263: 1625-1629.
3. Palombo.F, Mismatch repair and cancer. Nature 1994.367: 417-418.

Clone Number: 2A3E6

Isotype: IgG1

Species: Bovine

Storage and Stability: stored at -20 C

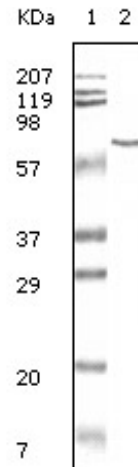


Figure 1: Western blot analysis using anti-BSA monoclonal antibody against BSA.