

Monoclonal Antibody to MCL-1

Cat. #: Mab-604030

Description:

Mcl-1 (Myeloid cell leukemia-1) is Bcl-2-related and was identified as an early-induction gene that increased in expression during the differentiation of human myeloblastic leukemia cell ML-1, or exposure to different DNA damaging agents. The level of Mcl-1 is decreased in peripheral B lymphocytes undergoing apoptosis following treatment with apoptotic stimuli such as TGF-alpha 1 and forskolin. Expression of Mcl-1 is able to delay apoptosis induced by over-expression of c-myc in CHO 5AHSmyc cells. In hematopoietic FDC-P1 cells, Mcl-1 interacts with another Bcl-2-related protein, Bax, and prolongs cell viability after treatment with different apoptotic reagents. This monoclonal antibody detected a 37kd MCL1 in BCBL-1 cell lysate.

Immunogen/Specificity:

Ni-NTA purified recombinant protein MCL-1 expressed in E. Coli strain M15.

Applications :

Western Blot: Dilution 1: 200- 1: 1,000

IHC(P): Dilution 1: 200- 1: 1,000

IHC(F): Dilution 1: 200- 1: 1,000

ELISA: Propose dilution 1: 10,000.

Determining optimal working dilutions by titration test.

Formulation

Antibodies are purified by protein G affinity chromatography.

Reference:

1. Ota, N. et al. J. Hum.

Genet. 2000. 46: 254-269.

2. Schwertfeger KL, Ryder JW, Anderson SM
J Mammary Gland Biol Neoplasia 2000, 3 : 236-251.

Clone Number: 8C6D4B1

Isotype: IgG1

Species: Human

Storage and Stability: stored at -20 C

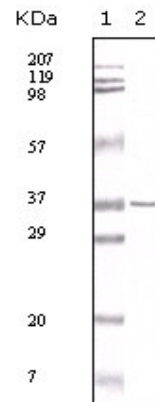


Figure 1: Western blot analysis using anti-Human MCL-1 monoclonal antibody against BCBL-1 cell lysate.

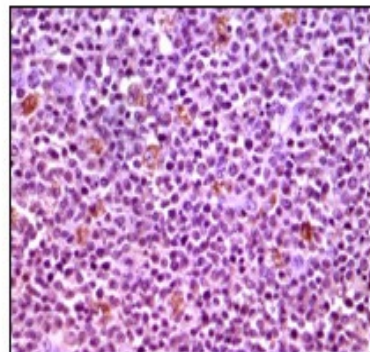


Figure 2: Immunohistochemical analysis of paraffin-embedded human lymphnode tissue showing cytoplasmic localization, using MCL-1 antibody with DAB staining.