

# Monoclonal Antibody to KSHV K8à

Cat. #: Mab-604017

## Description:

Kaposi's sarcoma-associated herpesvirus (KSHV) belongs to the gamma-(2)-herpesvirus subfamily and has been closely linked to the Kaposi's sarcoma, primary effusion lymphoma (PEL) and multicentric Castleman's disease. The genome of KSHV is 165-170 kb and contains at least 88 open reading frames. KSHV K8 and K8.1 open reading frames are juxtaposed and span from nucleotide (nt) 74850 to 76695 of the virus genome. A K8 pre-mRNA overlaps the entire K8.1 coding region, and alternative splicing of KSHV K8 and K8.1 pre-mRNAs each produces three isoforms ( $\alpha$ ,  $\beta$ , and  $\gamma$ ) of the mRNAs.

## Immunogen/Specificity:

Ni-NTA purified recombinant human KSHV K8à expressed in E. Coli strain BL21 (DE3).

## Applications :

Western Blot: Dilution 1: 500- 1,000

ICC: Dilution 1:50- 1: 100

Determining optimal working dilutions by titration test.

## Formulation

Crude ascites.

Clone Number: 8C12G10G1

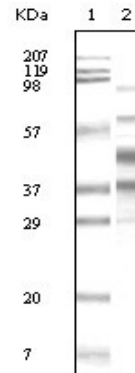
Isotype: IgG2a

Species KSHV

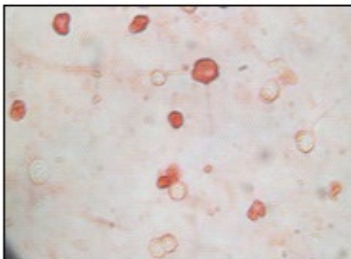
Storage and Stability: stored at -20 C

## Reference:

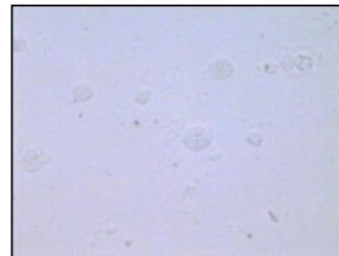
1. James J et al. Proc. Natl. Acad. Sci Vol. 1996. 93, pp. 14862-14867.



**Figure 1:** Western blot analysis using anti- KSHV K8à monoclonal antibody against TPA-induced BCBL-1 cell lysate.



TPA-induced BCBL-1 cells



Uninduced BCBL-1 cells

**Figure 2:** Immunocytochemistry staining of TPA-induced BCBL-1 cells and uninduced BCBL-1 cells, using monoclonal antibody to KSHV K8à . HRP-anti-mouse was used as the second antibody before color development with AEC.