

# Monoclonal Antibody to CD14

Cat. #: Mab-604023

## Description:

CD14 antigen is a GPI-linked glycoprotein with a molecular weight of 55kD. The CD14 antigen is expressed on cells of the myelomonocytic lineage including monocytes, macrophages and Langerhans cells. Low expression is observed on neutrophils and on human B cells. CD14 antigen is a receptor for bacterial lipopolysaccharide (LPS, endotoxin) and the lipopolysaccharide binding protein (LBP). LBP and CD14 antigen serves two physiological roles. These proteins act as opsonin and opsonic receptor, respectively, to promote the phagocytic uptake of bacteria or LPS-coated particles by macrophages.

## Immunogen/Specificity:

Ni-NTA purified recombinant human CD14 expressed in E. Coli strain BL21 (DE3).

## Applications :

IHC: Dilution 1:200-1:400

ELISA: Determining optimal working dilutions by titration test.

## Formulation

Antibodies are purified by protein G affinity chromatography and resuspended in PBS with 0.2%BSA, 0.09% sodium azide. No reconstitution is necessary

## References:

1. Richert MM, Schwertfeger KL, Ryder JW, Anderson SM: An atlas of mouse mammary gland development. J Mammary Gland Biol Neoplasia 2000, 5 : 227-241.
2. Masso-Welch PA, Darcy KM, Stangle-Castor NC, Ip MM: A developmental atlas of rat mammary gland histology. J Mammary Gland Biol Neoplasia 2000, 5 : 165-185.

Clone Number: 5A3B11B5

Isotype: IgG1

Species: Human

Storage and Stability: at -20oC

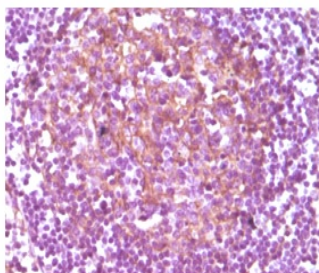


Figure 1 : anti-human CD14 antibody(1:1300)

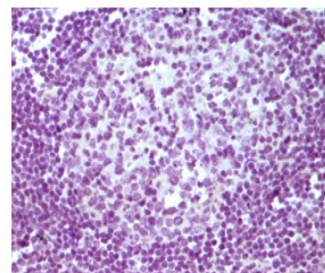


Figure 2: Normal mouse serum(1:20)

Immunohistochemical analysis of paraffin-embedded human normal lymphnode, showing membrane staining (Figure 1), using anti-human CD14 monoclonal antibody. HRP-anti-mouse was used as the second antibody before color development with DAB