



## Rac1 (Ab-71) Antibody

**Cat. #:** ANTY021201

**Species:** Human, Mouse, Rat

**Quantity:** 100ug

**Concentration:** 100ug/100ul

### Storage and Stability:

Store at -20°C/1 year

### Immunogen:

The antiserum was produced against synthesized non-phosphopeptide derived from human Rac1 around the phosphorylation site of serine 71 (P-L-SP-Y-P).

### Specificity:

Rac1 (Ab-71) antibody detects endogenous levels of total Rac1 protein.

### Tested Application: WB

**Application Notes:** Rabbit IgG in phosphate buffered saline (without Mg<sup>2+</sup> and Ca<sup>2+</sup>), pH 7.4, 150mM NaCl, 0.02% sodium azide and 50% glycerol.

**Raised In:** Rabbit

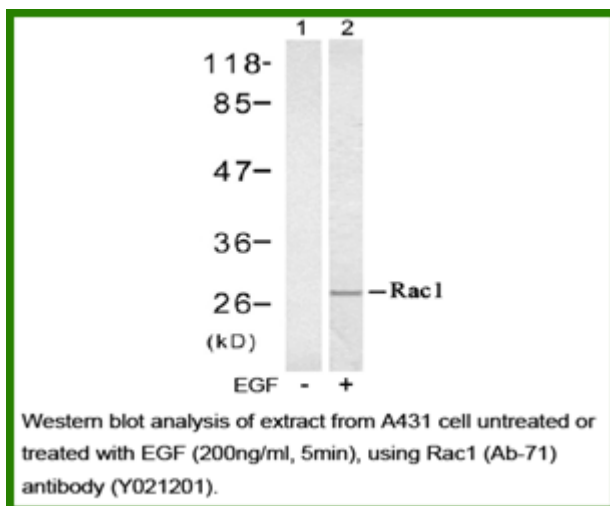
**Purity:** The antibody was affinity-purified from rabbit antiserum by affinity-chromatography using epitope-specific immunogen.

**Storage buffer:** WB: 1:500~1:1000

**Form:** Liquid

### Reference:

Aoki K, et al. (2005) Mol Biol Cell; 16(5): 2207–2217. Kwon T, et al. (2000) J Biol Chem; 275(1): 423-428



**For research use only**

Antagene, Inc. Toll Free: 1-866-964-2589, Fax: 1-888-225-1868, [info@antageneinc.com](mailto:info@antageneinc.com),  
[www.antageneinc.com](http://www.antageneinc.com)