



STAT6 (Ab-641) Antibody

Cat. #: ANTY021050

Species: Human

Quantity: 100ug

Concentration: 100ug/100ul

Storage and Stability:

Store at -20°C/1 year

Immunogen:

The antiserum was produced against synthesized non-phosphopeptide derived from human STAT6 around the phosphorylation site of tyrosine 641 (R-G-YP-V-P).

Specificity:

STAT6 (Ab-641) antibody detects endogenous levels of total STAT6 protein.

Tested Application: WB and IHC

Application Notes: Rabbit IgG in phosphate buffered saline (without Mg²⁺ and Ca²⁺), pH 7.4, 150mM NaCl, 0.02% sodium azide and 50% glycerol.

Raised In: Rabbit

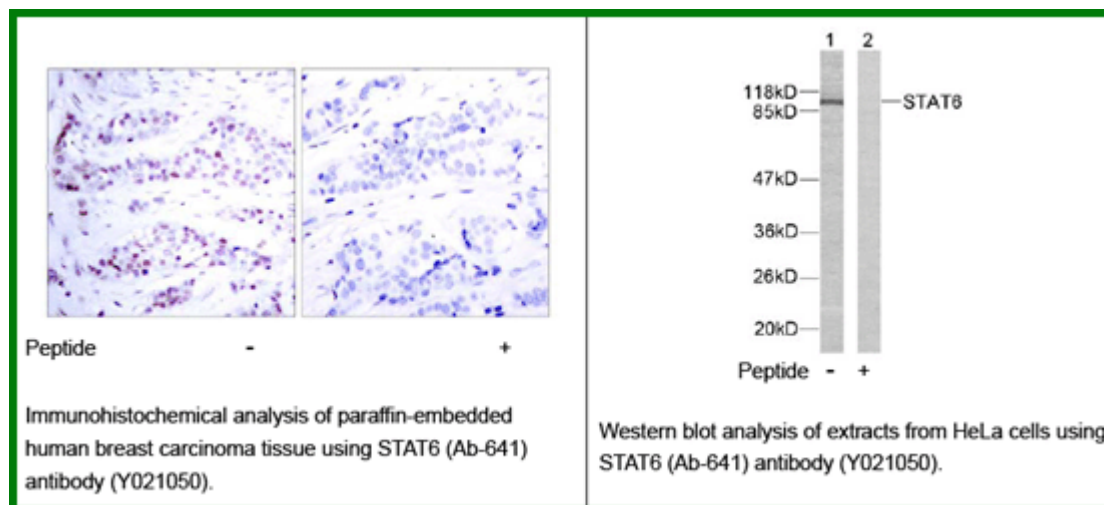
Purity: The antibody was affinity-purified from rabbit antiserum by affinity-chromatography using epitope-specific immunogen.

Storage buffer: WB: 1:500~1:1000 IHC: 1:50~1:100

Form: Liquid

Reference:

Nelms K, et al. (1999) *Annu Rev Immunol.* 17:701-738. Malabarba M G, et al. (1996) *Biochem. J.* 319:865-872. Hou J, et al. (1994) *Science.* 265:1701-1706. Quelle F W, et al. (1995) *Mol Cell Biol.* 15: 3336-3343. Takeda K, et al. (1996) *Nature.* 380: 627-630.



For research use only

Antagene, Inc. Toll Free: 1-866-964-2589, Fax: 1-888-225-1868, info@antageneinc.com,
www.antageneinc.com