



Raf1 (Ab-259) Antibody

Cat. #: ANTY021006

Species: Human, Mouse, Rat

Quantity: 100ug

Concentration: 100ug/100ul

Storage and Stability:

Store at -20°C/1 year

Immunogen:

This antiserum was produced against synthesized non-phosphopeptide derived from human Raf-1 around the phosphorylation site of serine 259 (S-T-SP-T-P).

Specificity:

Raf-1 (Ab-259) antibody detects endogenous levels of total Raf-1 protein.

Tested application: WB and IHC

Application Notes: Rabbit IgG in phosphate buffered saline (without Mg²⁺ and Ca²⁺), pH 7.4, 150mM NaCl, 0.02% sodium azide and 50% glycerol.

Raised In: Rabbit

Purity:

The antibody was affinity-purified from rabbit antiserum by affinity-chromatography using epitope-specific immunogen.

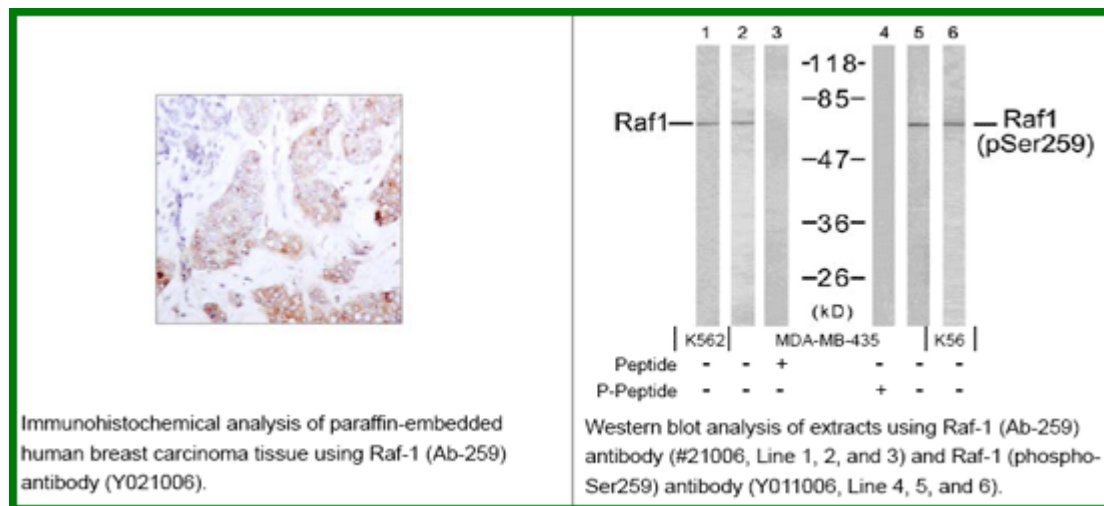
Storage buffer:

WB: 1:500~1:1000 IHC: 1:50~1:100

Form: Liquid

Reference:

Dougherty M K, et al. (2005) Mol Cell. 17(2): 215-224. Hekman M, et al. (2005) FEBS Lett. 579(2): 464-468. Avruch J, et al. (1994) Trends Biochem. Sci. 19, 279-283. Chong H, et al. (2001) EMBO J. 20, 3716-3727. King A J, et al. (1998) Nature. 396:180-183. Fabian J R, et al. (1993) Mol Cell Biol. 13: 7170-7179.



For research use only

Antagene, Inc. Toll Free: 1-866-964-2589, Fax: 1-888-225-1868, info@antageneinc.com, www.antageneinc.com