



BCL-XL (Phospho-Ser62) Antibody

Cat. # ANTY011066

Species: Human and Mouse

Quantity: 100ug

Concentration: 100ug/100ul

Storage and Stability: Store at -20°C/1 year

Immunogen : The antiserum was produced against synthesized phosphopeptide derived from human BCL-XL around the phosphorylation site of serine 62 (A-D-SP-P-A).

Specificity: BCL-XL (phospho-Ser62) antibody detects endogenous levels of BCL-XL only when phosphorylated at serine 62.

Tested application: WB, IHC

Application Notes: Rabbit IgG in phosphate buffered saline (without Mg²⁺ and Ca²⁺), pH 7.4, 150mM NaCl, 0.02% sodium azide and 50% glycerol.

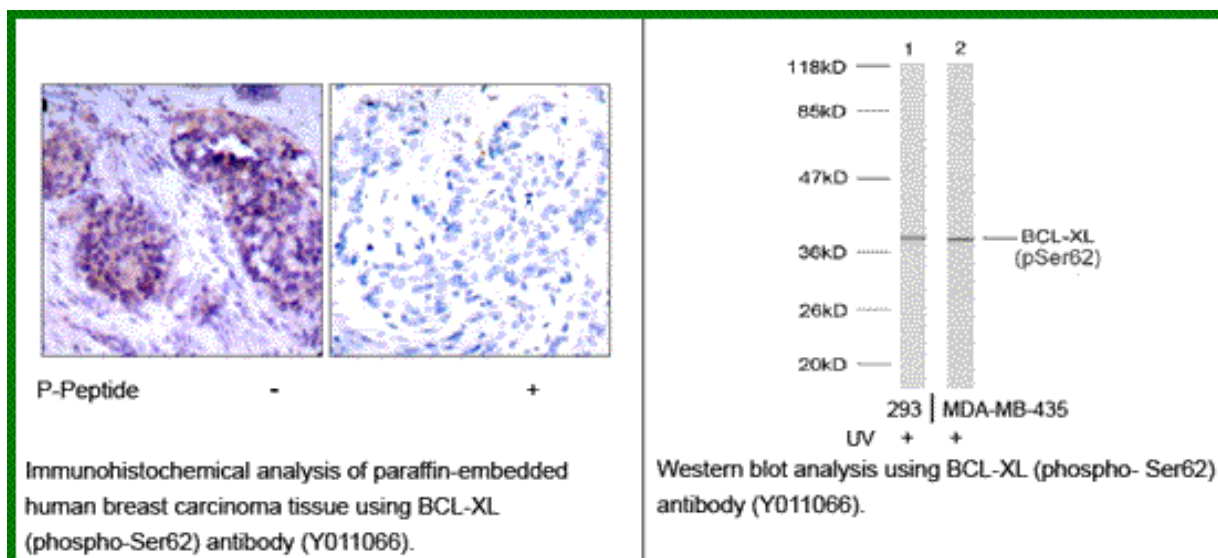
Raised In: Rabbit

Purity : The antibody was affinity-purified from rabbit antiserum by affinity-chromatography using epitope-specific phosphopeptide. The antibody against non-phosphopeptide was removed by chromatography using non-phosphopeptide corresponding to the phosphorylation site.

Storage buffer: WB: 1:500~1:1000 IHC: 1:50~1:100

Form: Liquid

References: Basu A, et.al.(2003) Mar 13; 538(1-3): 41-7 Cheng E.H.-Y.,et.al. (1996) Nature 379:554-556. Sattler M.et.al. (1997), Science 275:983-986. Muchmore S.W.et.al (1996).Nature 381:335-341 Yu J., Zhang L. Mol. (2001)Cell 7:673-682



For research use only

Antagene, Inc. Toll Free: 1-866-964-2589, Fax: 1-888-225-1868, info@antageneinc.com,
www.antageneinc.com