



## STAT6 (Phospho-Tyr641) Antibody

**Cat. #:** ANTY011050

**Species:** Human

**Quantity:** 100ug

**Concentration:** 100ug/100ul

**Storage and Stability:** Store at -20°C/1 year

**Immunogen:** The antiserum was produced against synthesized phosphopeptide derived from human STAT6 around the phosphorylation site of Tyrosine 641 (R-G-YP-V-P).

**Specificity:** STAT6 (phospho-Tyr641) antibody detects endogenous levels of STAT6 only when phosphorylated at tyrosine 641.

**Tested application:** WB and IHC

**Application Notes:** Rabbit IgG in phosphate buffered saline (without Mg<sup>2+</sup> and Ca<sup>2+</sup>), pH 7.4, 150mM NaCl, 0.02% sodium azide and 50% glycerol.

**Raised In:** Rabbit

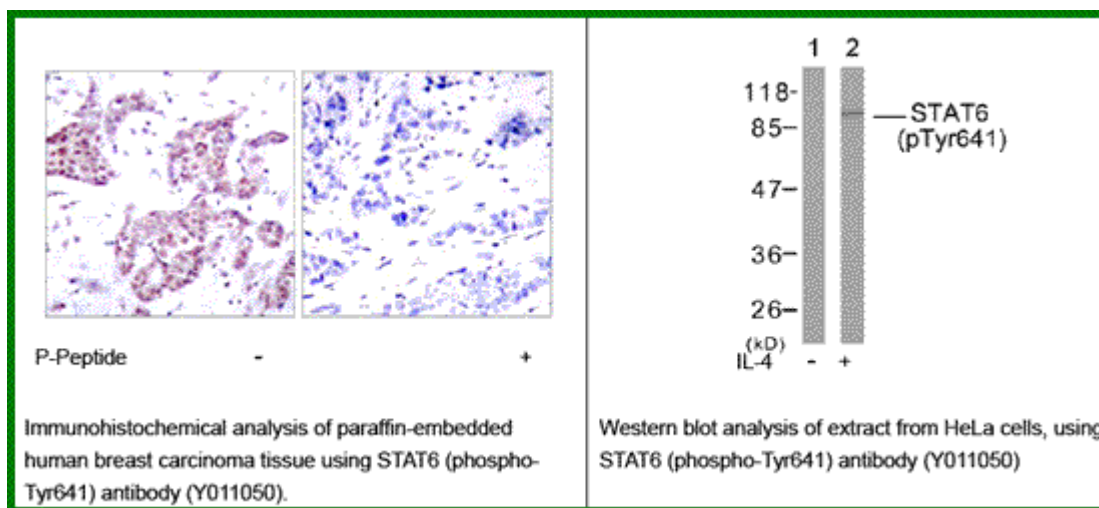
**Purity:** The antibody was affinity-purified from rabbit antiserum by affinity-chromatography using epitope-specific phosphopeptide. The antibody against non-phosphopeptide was removed by chromatography using non-phosphopeptide corresponding to the phosphorylation site.

**Storage buffer:** WB: 1:500~1:1000 IHC: 1:50~1:100

**Form:** Liquid

### References

Nelms K, et al. (1999) *Annu Rev Immunol.* 17:701-738. Malabarba M G, et al. (1996) *Biochem. J.* 319:865-872. Hou J, et al. (1994) *Science.* 265:1701-1706. Quelle F W, et al. (1995) *Mol Cell Biol.* 15: 3336-3343.



**For research use only**

Antagene, Inc. Toll Free: 1-866-964-2589, Fax: 1-888-225-1868, [info@antageneinc.com](mailto:info@antageneinc.com),  
[www.antageneinc.com](http://www.antageneinc.com)