



STAT3 (Phospho-Ser727) Antibody

Cat. # ANTY011046

Species: Human, Mouse and Rat

Quantity: 100ug

Concentration: 100ug/100ul

Storage and Stability: Store at -20°C/1 year

Immunogen : The antiserum was produced against synthesized phosphopeptide derived from human STAT3 around the phosphorylation site of serine 727 (P-M-SP-P-R).

Specificity: STAT3 (phospho-Ser727) antibody detects endogenous levels of STAT3 only when phosphorylated at serine 727.

Tested application: WB and IHC

Application Notes: Rabbit IgG in phosphate buffered saline (without Mg²⁺ and Ca²⁺), pH 7.4, 150mM NaCl, 0.02% sodium azide and 50% glycerol.

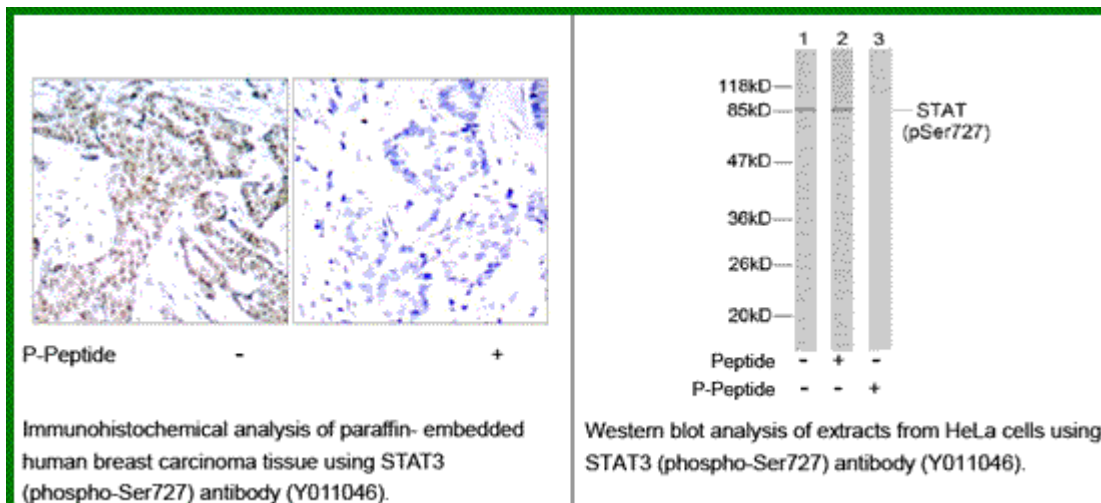
Raised In: Rabbit

Purity : The antibody was affinity-purified from rabbit antiserum by affinity-chromatography using epitope-specific phosphopeptide. The antibody against non-phosphopeptide was removed by chromatography using non-phosphopeptide corresponding to the phosphorylation site.

Storage buffer: WB: 1:500~1:1000 IHC: 1:50~1:100

Form: Liquid

References: Heim M H, (1999) J Recept Signal Transduct Res. 19: 75-120. Takeda K, et al. (1997) Proc Natl Acad Sci USA. 94: 3801-3804. Catlett-Falcone R, et al. (1999) Immunity. 10: 105-115.



For research use only

Antagene, Inc. Toll Free: 1-866-964-2589, Fax: 1-888-225-1868, info@antageneinc.com,
www.antageneinc.com

For research use only
Antagene, Inc. Toll Free: 1-866-964-2589, Fax: 1-888-225-1868, info@antageneinc.com,
www.antageneinc.com