

Monoclonal Antibody to Calcyclin

Cat. #: Mab-605129 (0.1mg)

Description:

Calcyclin encoded by this gene is a member of the S100 family of proteins containing 2 EF-hand calcium-binding motifs. S100 proteins are localized in the cytoplasm and/or nucleus of a wide range of cells, and involved in the regulation of a number of cellular processes such as cell cycle progression and differentiation. S100 genes include at least 13 members which are located as a cluster on chromosome 1q21. This protein may function in stimulation of Ca²⁺-dependent insulin release, stimulation of prolactin secretion, and exocytosis. Chromosomal rearrangements and altered expression of this gene have been implicated in melanoma.

Immunogen/Specificity:

GSTs Resin purified truncated recombinant calcyclin expressed in E. Coli strain BL21 (DE3)

Applications :

Western Blot: Dilution 1: 100- 1: 1,000

IHC^{IF}: Dilution 1: 100- 1: 500

IHC^{IF}: Dilution 1: 100- 1: 500

ELISA: Propose dilution 1: 10,000.

Determining optimal working dilutions by titration test.

Formulation

Antibodies are purified by protein A affinity chromatography

Reference:

1. Bean C.et.al J Mol Biol. 2005 Jun 3;349(2):349-66.

2. HWang R.et.al J Biol Chem. 2004 May 14;279(20):21239-47.

Clone Number: 7D11A8

Isotype: IgG1

Species: Human

Storage and Stability: stored at -20 C

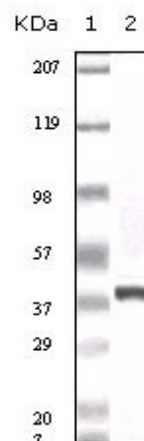


Figure 1: Western blot analysis using anti- human calcyclin monoclonal antibody against truncated calcyclin recombinant protein.

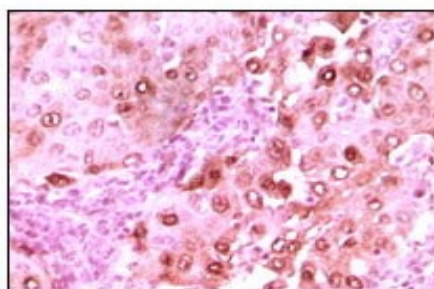


Figure 2: Immunohistochemical analysis of paraffin-embedded brain glioma tissue showing nuclear localization, using calcyclin antibody with DAB staining.